

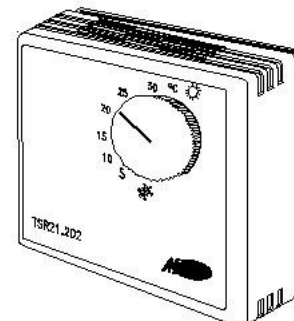
On-off Room Thermostats

Diaphragm type, range: 0...30 °C/220Vac
with Heat/Cool selector switches

TSR21,202

TSR21. 20222I Standard type

Color of case; B=Beige, W=white, I=Ivory, 9=Options
Output time-out; 1=120s, 2=60s, 3=30s, 4=15s, 5=7.5s, 9=Option
Control range; 2= 0...30 °C, 3=0...35 °C, 5=0...50 °C, 9=Options
Output; 2=On/Off, 3=3-pos, 4= pulse, 9=Options
power supply; 0= none, 1= 110vac, 2=220vac, 3=3Vdc, 8=24vac
Nr. of switch: 0 = none, 1=on/off, 2= heating/cooling, 3=2+speed s/w
Version No.
Sensing element; 1=Bellows, 2=diaphragm, 3=Bi-metal, 4=Electronic
Application : R= Room type
Function : S= Switch
Product group : T=Temperature



Description

Electro-mechanical thermostat for wall mounting with auxiliary switches for new on-off control system used for terminal unit or Fan coil units in air conditioning system.

Application

In air conditioning system, heating and cooling control with Fan Coil Unit installations require zone control by thermostat for energy saving and maintaining comfort environment. Compact design of the case is ideal for vertical and Horizontal mounting on the wall. Suitable for use with Zone valves with ordinary On-off valves

Ordering Specification

When ordering, please give full designation and type reference of unit;

Ex: **TSR21.20232I** Room mounting
Diaphragm thermostat
1 switches
1 output,
0...30 °C
Ivory color

Technical Data

Sensing element
Switching capacity

Standard type
Gas filled diaphragm
6A Res.
3A Ind.

Permissible amb.temp.
Operation
Transport & storage
Operating range

-25...65° C
-15...50° C
0...30° C

Switching accuracy at 20 °C
Permissible amb.humid.
Protection standard of housing
Cable entry glands
Weight

± 1.3 k
Class D to DIN 40040
IP42
pg 11
100~ 150g

Summary of Types

Type	Switches & functions				
	on/off	H/C	fan/sw	timeout	available
TSR21.20232I	O	O			O

Function

The thermostat senses temperature in the air by the Gas filled expansion element which gives changes of mechanical lever to move electrical contact according to temperature in the air. The change of movement actuate the snap action switch contacts which is being transferred directly to the standard screw terminals.

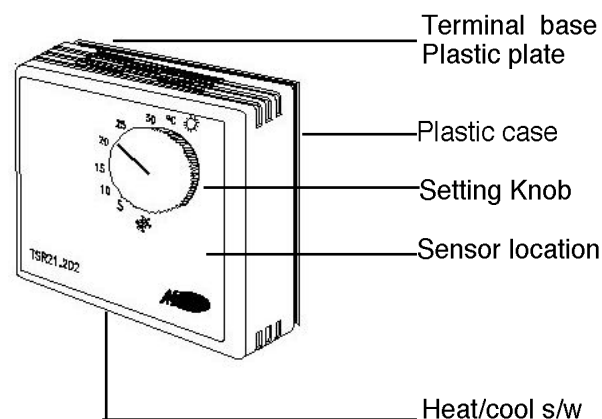
Design Features

The base is very compact and made of engineering plastics since it has only terminal to prevent unwanted damage of electronics by the workers while installation at the job site.

Mounting the unit and de-mounting is very simple and easy since there is no need to disconnect the wiring and shut down the power supply for checking the units. there is no need of special tools nor adjustments.

- Entirely Maintenance free gas filled diaphragm type sensing element.
- SPST switch
- Built-in thermal acceleration heater optional
- Flat wall mounting possible
- Horizontal or Vertical mount
- Various color available

Structure



Application Advice

For further information on the complete thermostat unit also refer to the Mounting instruction of each units

Mounting and Installation Advice

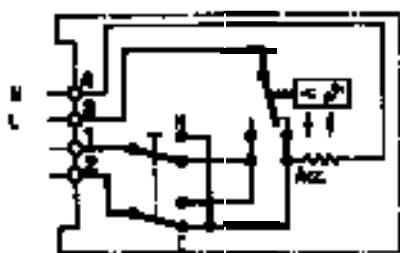
Mounting positions:

When the unit has to be mounted on the wall of high traffic area the location of the unit must be kept between 1 to 1.2meter the floor level.

For best control of the temperature follow recommendation as;

- from floor level ; between 1 to 1.2 meters
- from opening, horizontal ; between 1 to 2 meters

Internal Diagrams

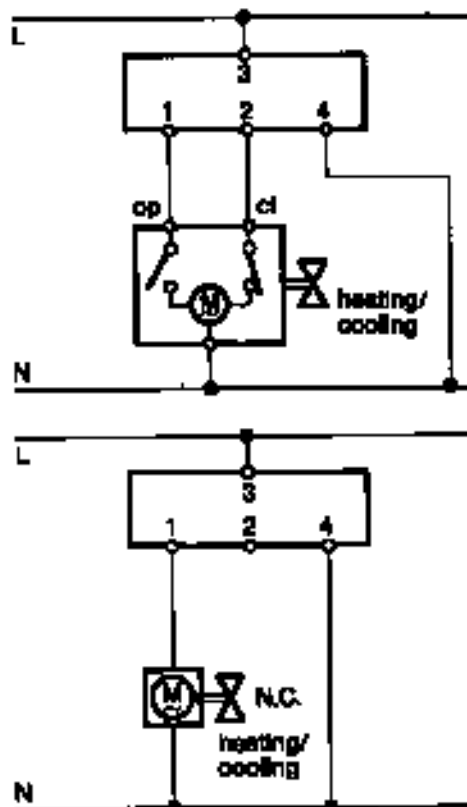


The thermostat mounting instructions are included in the delivery box together with products.

Commissioning Advice

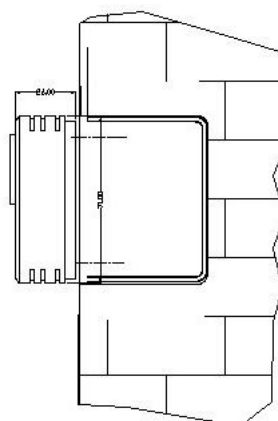
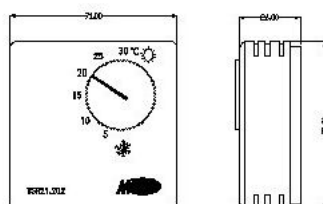
When commissioning the installation, check the wiring and the air movement.

Wiring Diagrams



Dimensions

TSR21.



Dimensions in mm

We reserve the right to make changes and improvements in our products which may affect the accuracy of the information contained in this sales.

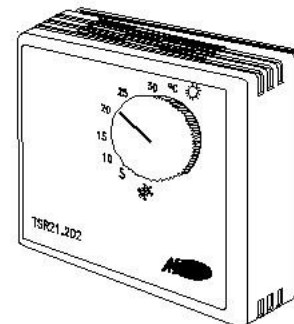
On-off Room Thermostats

Diaphragm type, range: 0...30 °C/220Vac
with Heat/Cool selector switches

TSR21,202

TSR21. 20222I Standard type

Color of case; B=Beige, W=white, I=Ivory, 9=Options
Output time-out; 1=120s, 2=60s, 3=30s, 4=15s, 5=7.5s, 9=Option
Control range; 2= 0...30 °C, 3=0...35 °C, 5=0...50 °C, 9=Options
Output; 2=On/Off, 3=3-pos, 4= pulse, 9=Options
power supply; 0= none, 1= 110vac, 2=220vac, 3=3Vdc, 8=24vac
Nr. of switch: 0 = none, 1=on/off, 2= heating/cooling, 3=2+speed s/w
Version No.
Sensing element; 1=Bellows, 2=diaphragm, 3=Bi-metal, 4=Electronic
Application : R= Room type
Function : S= Switch
Product group : T=Temperature



Description

Electro-mechanical thermostat for wall mounting with auxiliary switches for new on-off control system used for terminal unit or Fan coil units in air conditioning system.

Application

In air conditioning system, heating and cooling control with Fan Coil Unit installations require zone control by thermostat for energy saving and maintaining comfort environment.

Compact design of the case is ideal for vertical and Horizontal mounting on the wall.

Suitable for use with Zone valves with ordinary On-off valves

Ordering Specification

When ordering, please give full designation and type reference of unit;

Ex: **TSR21.20232I** Room mounting
Diaphragm thermostat
1 switches
1 output,
0...30 °C
Ivory color

Technical Data

Sensing element
Switching capacity

Standard type
Gas filled diaphragm
6A Res.
3A Ind.

Permissible amb.temp.

Operation
Transport & storage
Operating range

-25...65° C
-15...50° C
0...30° C

Switching accuracy at 20 °C

Permissible amb.humid.
Protection standard of housing
Cable entry glands
Weight

± 1.3 k
Class D to DIN 40040
IP42
pg 11
100~ 150g

Summary of Types

Type	Switches & functions				
	on/off	H/C	fan/sw	timeout	available
TSR21.20232I	O	O			O

Function

The thermostat senses temperature in the air by the Gas filled expansion element which gives changes of mechanical lever to move electrical contact according to temperature in the air. The change of movement actuate the snap action switch contacts which is being transferred directly to the standard screw terminals.

Design Features

The base is very compact and made of engineering plastics since it has only terminal to prevent unwanted damage of electronics by the workers while installation at the job site.

Mounting the unit and de-mounting is very simple and easy since there is no need to disconnect the wiring and shut down the power supply for checking the units. there is no need of special tools nor adjustments.

- Entirely Maintenance free gas filled diaphragm type sensing element.
- SPST switch
- Built-in thermal acceleration heater optional
- Flat wall mounting possible
- Horizontal or Vertical mount
- Various color available

Structure

