

MODEL: M500 a.c.

Robust pump with proven track record for a variety of applications including vending, chemical dosing and condensate removal. Flow rates up to 730 ml/min

Pump head: Polycarbonate - standard
Noryl - optional

Motor: Asynchronous shaded pole motor with spur gearbox

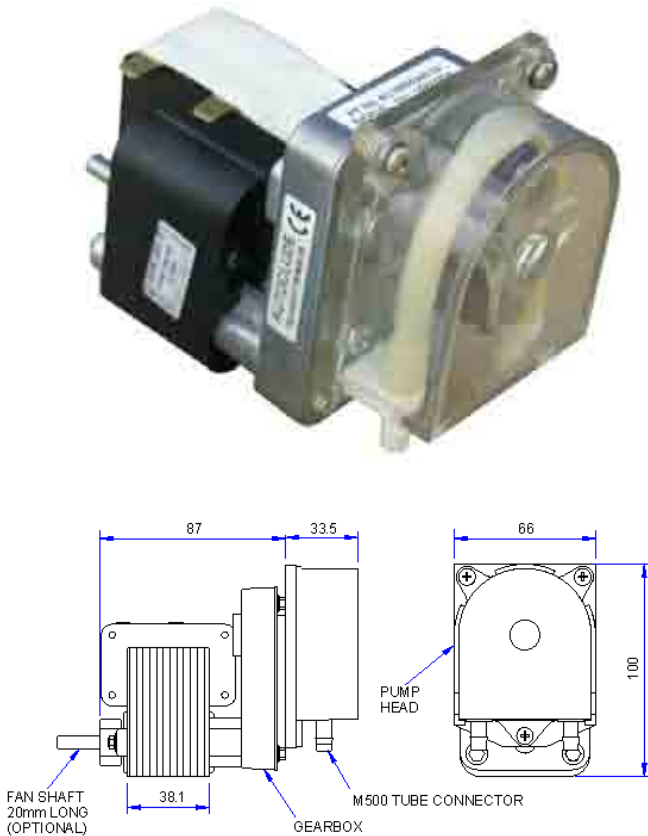
Rotor: 2 Roller Polycarbonate

Options: 3 Roller Rotor
Different motor stack sizes for varied torque applications: - ¾", 1", 1 ½"

Power Supply: 110, 220, 240v 50/60 Hz

Tube: Silicone, Autoprene, Tygon, Viton and Prothane 1.6mm, 3.2mm & 4.8mm

Weight: 1.5Kg



FLOW RATES ml/min							
TUBE	30 RPM	51 RPM	82 RPM	125 RPM	176 RPM	240 RPM	325 RPM
1.6 mm	8.40 ml/min	14.28 ml/min	22.96 ml/min	35.00 ml/min	49.28 ml/min	67.20 ml/min	91.00 ml/min
3.2 mm	30.00 ml/min	51.00 ml/min	82.00 ml/min	125.00 ml/min	176.00 ml/min	240.00 ml/min	325.00 ml/min
4.8 mm	67.50 ml/min	114.75 ml/min	184.50 ml/min	281.25 ml/min	386.00 ml/min	540.00 ml/min	731.25 ml/min

Identify required flow rate in above table and select largest tube size with slowest motor speed to achieve best tube life.



MODEL: M500 a.c. synchronous

By combining a robust pump with a quality slow running motor and gearbox continuous low flow rate duties are possible. Flow rates up to 90 ml/min

Pump head: Clear polycarbonate as standard
Optional Noryl

Motor: Synchronous motor with spur gearbox

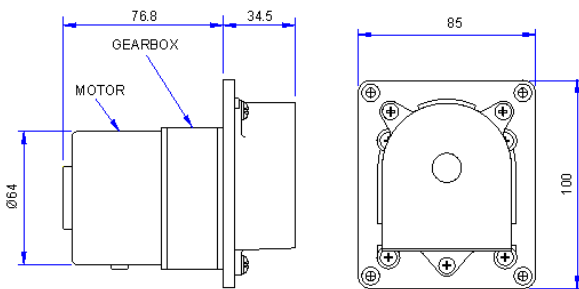
Rotor: 2 roller polycarbonate

Options: 3 roller rotor

Power Supply: 230v 50/60Hz

Tube: Silicone, Autoprene, Tygon & Viton
1.6mm, 3.2mm & 4.8mm

Weight: 1.2Kg



FLOW RATES ml/min			
TUBE	13 RPM	20 RPM	40 RPM
1.6mm	3.64 ml/min	5.80 ml/min	11.20 ml/min
3.2mm	13.00 ml/min	20.00 ml/min	40.00 ml/min
4.8mm	29.25 ml/min	45.00 ml/min	90.00 ml/min

Identify required flow rate in above table and select largest tube size with slowest motor speed to achieve best tube life.



MODEL: M500 d.c.

Versatile peristaltic pump with many speed and flow rate options. Durable pump head, ideal for a wide range of applications. Flow rates of up to 675 ml/min.

Pump head: Polycarbonate - standard
Noryl - optional

Motor: Permanent Magnet with spur gearbox

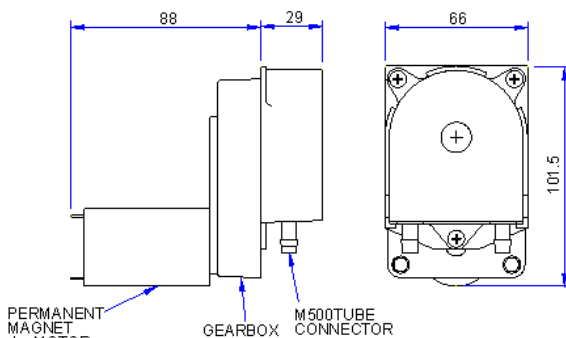
Rotor: 2 Roller Polycarbonate

Options: 3 Roller Rotor

Power Supply: 12/24v d.c. 15W

Tube: Silicone, Autoprene, Tygon, Viton, Prothane 1.6mm, 3.2mm & 4.8mm

Weight: 0.7Kg



FLOW RATES ml/min						
TUBE	51 RPM	82 RPM	125 RPM	176 RPM	240 RPM	300 RPM
1.6 mm	14.28 ml/min	22.96 ml/min	35.00 ml/min	49.28 ml/min	67.20 ml/min	84.00 ml/min
3.2 mm	61.00 ml/min	92.00 ml/min	126.00 ml/min	176.00 ml/min	240.00 ml/min	300.00 ml/min
4.8 mm	114.75 ml/min	184.50 ml/min	281.25 ml/min	396.00 ml/min	540.00 ml/min	675.00 ml/min

Identify required flow rate in above table and select largest tube size with slowest motor speed to achieve best tube life.

MODEL: M500 BLDC

By fitting a quality brushless d.c. motor to the reliable M500 pump it is possible to achieve continuous duty with variable speed/flow rates, attainable with the motor's integral electronics. Flow rates of up to 300ml/min

Pump head: Clear polycarbonate as standard
Optional Noryl

Motor: Brushless d.c. motor with spur gearbox

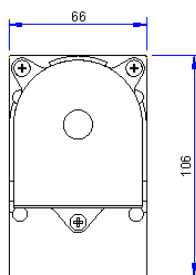
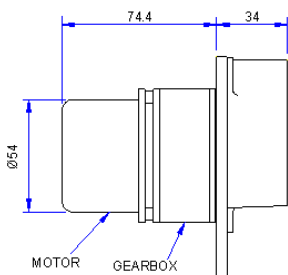
Rotor: 2 roller polycarbonate

Options: 3 roller rotor

Power Supply: 12/24v d.c.

Tube: Silicone, Autoprene, Tygon & Viton
1.6mm, 3.2mm & 4.8mm

Weight: 1.2Kg



FLOW RATES ml/min			
TUBE	35 RPM	80 RPM	135 RPM
1.6 mm	9.8 ml/min	22.4 ml/min	37.8 ml/min
3.2 mm	35.0 ml/min	80.0 ml/min	135.0 ml/min
4.8 mm	78.75 ml/min	180.0 ml/min	303.75 ml/min

Identify required flow rate in above table and select largest tube size with slowest motor speed to achieve best tube life.