

Features

- Specially designed for reverse jet-type dust collector systems.
- High flow Cv's to 140 for effective bag cleaning.
- High cycle life.
- Fast opening/closing.

Construction

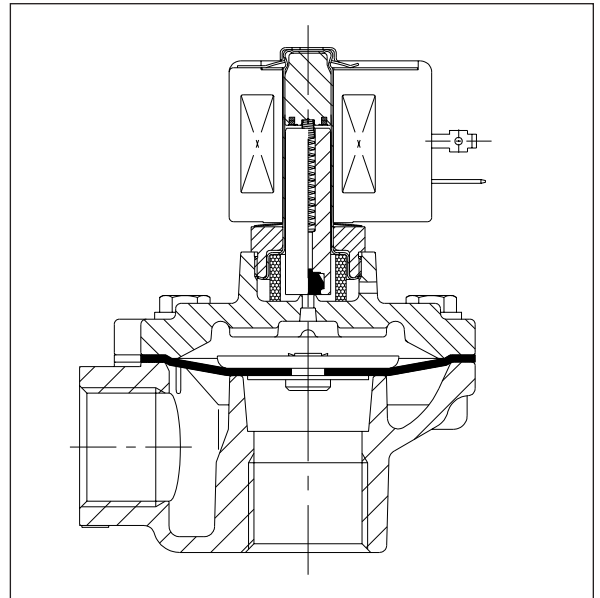
| Valve Parts in Contact with Fluids | |
|------------------------------------|---------------------------|
| Body | Aluminum |
| Seals | NBR |
| Diaphragm | NBR, HYT, or CR, as noted |
| Discs | NBR or PA, as noted |



Electrical

| Standard Coil and Class of Insulation | Watt Rating and Power Consumption | | | Spare Coil Part No. | |
|---------------------------------------|-----------------------------------|------------|-----------|---------------------|----------------|
| | AC | | | General Purpose | Explosionproof |
| | Watts | VA Holding | VA Inrush | AC | AC |
| F | 6.1 | 16 | 30 | 238210 | 238214 |
| F | 10.1 | 25 | 50 | 238610 | 238614 |
| F | 17.1 | 40 | 70 | 238610 | 238614 |

Standard Voltages: 24, 120, 240, 480 volts AC, 60 Hz (or 110, 220 volts AC, 50 Hz). Consult factory for DC voltage. Other voltages are available when required.



Solenoid Enclosures

Standard: Watertight, Types 1, 2, 3, 3S, 4, and 4X.
Optional: Explosionproof and Watertight, Types 3, 3S, 4, 4X, 6, 6P, 7, and 9.
 (To order, add prefix "EF" to catalog number.)
 See *Optional Features Section* for other available options.
 Consult your local ASCO office for details on accessories.

Nominal Temperature Ranges:

Ambient: AC constructions: 0°F to 185°F (-18°C to 85°C).
 150°F (66°C) maximum for valves with HYT diaphragm.
 Consult local sales office for DC constructions.

Fluids: 0°F to 185°F (-18°C to 85°C), except as noted.
 For temperatures to 300°F (149°C), specify FPM, suffix "V" (except where noted).
 Refer to *Engineering Section* for details.

SERIES
8353
Dust Collector



Specifications (English units)

| Pipe Size (ins.) | Orifice Size (ins.) | Cv Flow Factor | Min. Operating Pressure Differential (psi) ⑩ | Max. Operating Pressure Differential (psi) ⑩ | Integral Pilot | | Remote Pilot Construction (Minimum Pilot Valve Orifice Size = 1/8") | Constr. Ref. No. | Watt Rating/Class of Coil Insulation | Rebuild Kit AC Valves | Diaphragm Only 10 Pack "Zip" Kit |
|------------------|---------------------|----------------|--|--|----------------|----------------|---|------------------|--------------------------------------|-----------------------|----------------------------------|
| | | | | | Catalog Number | Catalog Number | | | | | |
| 3/4 | 3/4 | 10.5 | 5 | 125 | -- | | 8353C33 ③ | 1 | - | K96875 | K238864 |
| 3/4 ① | 3/4 | 10.5 | 5 | 125 | -- | | 8353C30 ③ | 1 | - | K96875 | K238864 |
| 3/4 ② | 3/4 | 10.5 | 5 | 125 | -- | | 8353C4 ③ | 1 | - | K96875 | K238864 |
| 1 | 1 1/8 | 20 | 5 | 125 | -- | | 8353C35 ④ | 1 | - | K200262 | K238866 |
| 1 | 1 1/8 | 20 | 5 | 125 | 8353G41 ④ | -- | | 4 | 6.1/F | 316563 | K238866 |
| 1 | 1 5/8 | 18 | 15 | 125 | 8353G6 ⑤ ⑧ | -- | | 3 | 17.1/F | K300144 | -- |
| 1 1/4 | 1 5/8 | 20 | 15 | 125 | 8353G5 ⑤ ⑧ | -- | | 3 | 17.1/F | K300144 | -- |
| 1 1/2 | 1 1/2 | 35 | 15 | 125 | 8353G1 ⑤ ⑧ | -- | | 3 | 17.1/F | K300144 | -- |
| 1 1/2 | 2 | 53 | 10 | 125 | -- | | 8353H38 ④ | 2 | - | K276886 | K238870 |
| 1 1/2 | 2 | 53 | 5 | 125 | 8353J39 ④ | -- | | 5 | 10.1/F | K322108 | K238870 |
| 1 1/2 | 2 | 48 | 5 | 125 | 8353G61 ⑨ | -- | | 5 | 10.1/F | K316297 | -- |
| 1 1/2 | 2 | 48 | 10 | 125 | -- | | 8353A62 ⑨ | 2 | - | K276884 | -- |
| 2 | 2 | 60 | 15 | 125 | 8353G2 ⑤ ⑧ | -- | | 3 | 17.1/F | K300145 | -- |
| 2 | 2 | 76 | 5 | 125 | -- | | 835348 ⑥ ⑦ | 2 | - | K256802 | K256797 |
| 2 | 2 | 76 | 5 | 125 | 8353G50 ⑥ | -- | | 5 | 10.1/F | K316029 | K256797 |
| 2 1/2 | 2 1/2 | 82 | 5 | 125 | -- | | 835349 ⑥ ⑦ | 2 | - | K256802 | K256797 |
| 2 1/2 | 2 1/2 | 82 | 5 | 125 | 8353G51 ⑥ | -- | | 5 | 10.1/F | K316029 | K256797 |
| 2 1/2 | 3 | 82 | 15 | 125 | 8353G7 ⑤ | -- | | 6 | 10.1/F | K176878 | -- |
| 3 | 3 | 140 | 15 | 125 | 8353G8 ⑤ | -- | | 6 | 10.1/F | K176878 | -- |

Notes: ① Supplied with internal slip fit connection on outlet.
 ② Extended ends for Dresser connections.
 ③ NBR diaphragm.
 ④ HYT diaphragm max. fluid temp. 150°F. For higher temperature, consult factory.
 ⑤ CR diaphragm/PA disc.
 ⑥ CR diaphragm.
 ⑦ Minimum pilot orifice size 7/32".
 ⑧ Consult factory for remote piloted construction.
 ⑨ NBR diaphragm, PA disc, long-life construction. Maximum fluid temp. 185°F.
 ⑩ Contact local sales office for DC pressure requirements.

Specifications (Metric units)

| Pipe Size (ins.) | Orifice Size (mm) | Kv Flow Factor (m3/h) | Min. Operating Pressure Differential (bar) ⑩ | Max. Operating Pressure Differential (bar) ⑩ | Integral Pilot | | Remote Pilot Construction (Minimum Pilot Valve Orifice Size = 1/8") | Constr. Ref. No. | Watt Rating/Class of Coil Insulation | Rebuild Kit AC Valves | Diaphragm Only 10 Pack "Zip" Kit |
|------------------|-------------------|-----------------------|--|--|----------------|----------------|---|------------------|--------------------------------------|-----------------------|----------------------------------|
| | | | | | Catalog Number | Catalog Number | | | | | |
| 3/4 | 19 | 9.0 | 0.3 | 8.6 | -- | | 8353C33 ③ | 1 | - | K96875 | K238864 |
| 3/4 ① | 19 | 9.0 | 0.3 | 8.6 | -- | | 8353C30 ③ | 1 | - | K96875 | K238864 |
| 3/4 ② | 19 | 9.0 | 0.3 | 8.6 | -- | | 8353C4 ③ | 1 | - | K96875 | K238864 |
| 1 | 29 | 17.1 | 0.3 | 8.6 | -- | | 8353C35 ④ | 1 | - | K200262 | K238866 |
| 1 | 29 | 17.1 | 0.3 | 8.6 | 8353G41 ④ | -- | | 4 | 6.1/F | 316563 | K238866 |
| 1 | 41 | 15.4 | 1.0 | 8.6 | 8353G6 ⑤ ⑧ | -- | | 3 | 17.1/F | K300144 | -- |
| 1 1/4 | 41 | 17.1 | 1.0 | 8.6 | 8353G5 ⑤ ⑧ | -- | | 3 | 17.1/F | K300144 | -- |
| 1 1/2 | 38 | 30.0 | 1.0 | 8.6 | 8353G1 ⑤ ⑧ | -- | | 3 | 17.1/F | K300144 | -- |
| 1 1/2 | 51 | 45.4 | 0.7 | 8.6 | -- | | 8353H38 ④ | 2 | - | K276886 | K238870 |
| 1 1/2 | 51 | 45.4 | 0.3 | 8.6 | 8353J39 ④ | -- | | 5 | 10.1/F | K322108 | K238870 |
| 1 1/2 | 51 | 41.1 | 0.3 | 8.6 | 8353G61 ⑨ | -- | | 5 | 10.1/F | K316297 | -- |
| 1 1/2 | 51 | 41.1 | 0.7 | 8.6 | -- | | 8353A62 ⑨ | 2 | - | K276884 | -- |
| 2 | 51 | 51.4 | 1.0 | 8.6 | 8353G2 ⑤ ⑧ | -- | | 3 | 17.1/F | K300145 | -- |
| 2 | 51 | 65.1 | 0.3 | 8.6 | -- | | 835348 ⑥ ⑦ | 2 | - | K256802 | K256797 |
| 2 | 51 | 65.1 | 0.3 | 8.6 | 8353G50 ⑥ | -- | | 5 | 10.1/F | K316029 | K256797 |
| 2 1/2 | 64 | 70.3 | 0.3 | 8.6 | -- | | 835349 ⑥ ⑦ | 2 | - | K256802 | K256797 |
| 2 1/2 | 64 | 70.3 | 0.3 | 8.6 | 8353G51 ⑥ | -- | | 5 | 10.1/F | K316029 | K256797 |
| 2 1/2 | 76 | 70.3 | 1.0 | 8.6 | 8353G7 ⑤ | -- | | 6 | 10.1/F | K176878 | -- |
| 3 | 76 | 120.0 | 1.0 | 8.6 | 8353G8 ⑤ | -- | | 6 | 10.1/F | K176878 | -- |

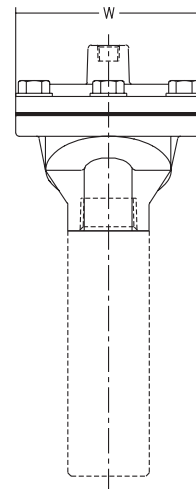
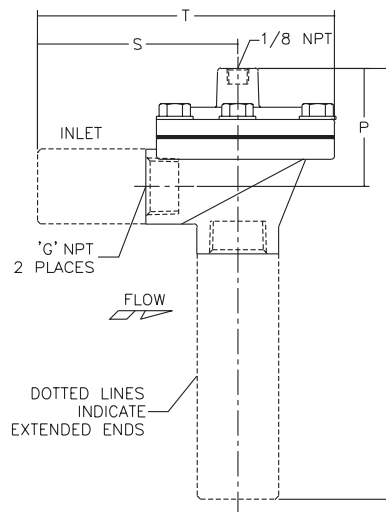
SERIES
8353
 Dust Collector



Dimensions: inches (mm)

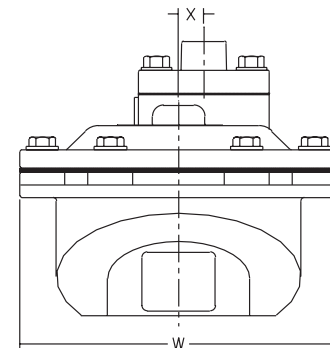
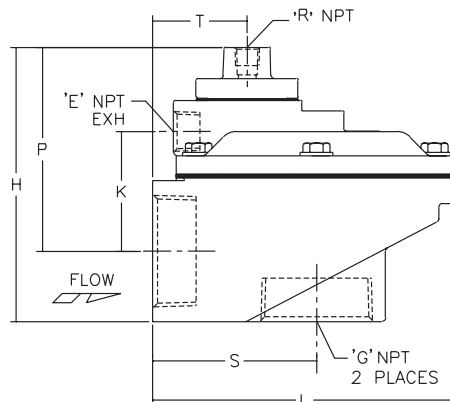
| Cat. No. | "G" | | H | L | P | Bonnet Bolts | T | W |
|----------|---------------------|------|-------|------|------|--------------|-------|------|
| 8353C4 | Extended End | ins. | 7.94 | 3.69 | 2.16 | 5.00 | 5.16 | 3.44 |
| | | mm | 201.6 | 93.7 | 54.8 | 127.0 | 131.0 | 87.3 |
| 8353C30 | 3/4 NPT (Inlet) | ins. | 3.44 | 1.69 | 2.19 | 5.00 | 3.47 | 3.44 |
| | | mm | 87.3 | 42.9 | 55.6 | 127.0 | 88.1 | 87.3 |
| | 3/4 Socket (Outlet) | ins. | 3.44 | 1.69 | 2.19 | 5.00 | 3.47 | 3.44 |
| | | mm | 87.3 | 42.9 | 55.6 | 127.0 | 88.1 | 87.3 |
| 8353C33 | 3/4 NPT | ins. | 3.44 | 1.69 | 2.19 | 5.00 | 3.47 | 3.44 |
| | | mm | 87.3 | 42.9 | 55.6 | 127.0 | 88.1 | 87.3 |
| 8353C35 | 1 NPT | ins. | 2.53 | 2.03 | 1.69 | 4.00 | 3.50 | 2.94 |
| | | mm | 64.3 | 51.6 | 42.9 | 101.6 | 88.9 | 74.6 |

Constr. Ref. 1



| Cat. No. | "E" NPT | "G" NPT | H | L | P | "R" NPT | S | T | W | X | |
|----------|---------|---------|------|-------|-------|---------|-----|------|------|-------|------|
| 8353H38 | 3/8 | 1 1/2 | ins. | 4.63 | 5.16 | 3.44 | 1/8 | 2.78 | 1.61 | 5.38 | 0.44 |
| | | | mm | 117.5 | 131.0 | 87.3 | | 70.6 | 40.9 | 136.5 | 11.1 |
| 8353A62 | 3/8 | 1 1/2 | ins. | 5.16 | 5.16 | 3.44 | 1/8 | 2.78 | 1.61 | 5.38 | 0.44 |
| | | | mm | 131.0 | 131.0 | 87.3 | | 70.6 | 40.9 | 136.5 | 11.1 |
| 835348 | 3/4 | 2 | ins. | 6.47 | 6.63 | 4.69 | 1/4 | 3.75 | 2.56 | 6.50 | -- |
| | | | mm | 164.3 | 168.3 | 119.1 | | 95.3 | 65.1 | 165.1 | -- |
| 835349 | 3/4 | 2 1/2 | ins. | 6.47 | 6.63 | 4.69 | 1/4 | 3.75 | 2.56 | 6.50 | -- |
| | | | mm | 164.3 | 168.3 | 119.1 | | 95.3 | 65.1 | 165.1 | -- |

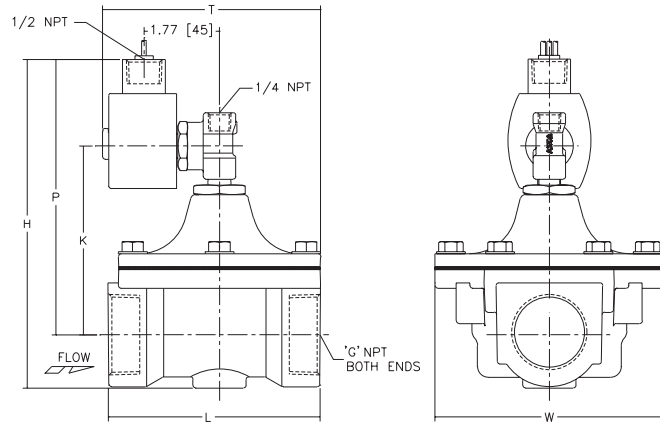
Constr. Ref. 2



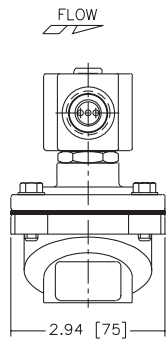
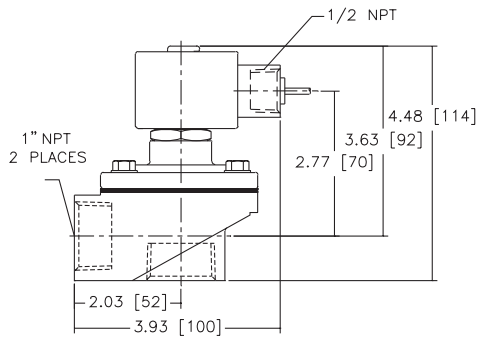
Dimensions: inches (mm)

Constr. Ref. 3

| Cat. No. | "G" NPT | | H | L | P | S | T | W |
|----------|---------|------|-------|-------|-------|------|-------|-------|
| 8353G1 | 1 1/2 | ins. | 7.72 | 5.00 | 6.47 | 1.78 | 5.13 | 5.38 |
| | | mm | 196.1 | 127.0 | 164.3 | 45.2 | 130.2 | 136.5 |
| 8353G2 | 2 | ins. | 8.34 | 6.09 | 6.84 | 1.78 | 5.56 | 6.34 |
| | | mm | 211.9 | 154.8 | 173.8 | 45.2 | 141.3 | 161.1 |
| 8353G5 | 1 1/4 | ins. | 7.72 | 5.00 | 6.47 | 1.78 | 5.13 | 5.38 |
| | | mm | 196.1 | 127.0 | 164.3 | 45.2 | 130.2 | 136.5 |
| 8353G6 | 1 | ins. | 7.72 | 5.00 | 6.41 | 1.78 | 5.13 | 5.38 |
| | | mm | 196.1 | 127.0 | 162.7 | 45.2 | 130.2 | 136.5 |

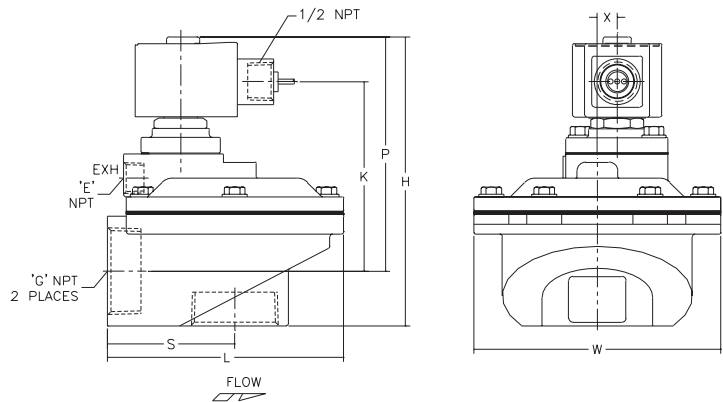


Constr. Ref. 4



Constr. Ref. 5

| Cat. No. | "E" NPT | "G" NPT | | H | L | P | S | T | W | X |
|----------|---------|---------|------|-------|-------|-------|------|------|-------|------|
| 8353J39 | 3/8 | 1 1/2 | ins. | 6.28 | 5.16 | 5.08 | 2.78 | 1.61 | 5.38 | 0.44 |
| | | | mm | 159.5 | 131.0 | 129.0 | 70.6 | 40.9 | 136.5 | 11.1 |
| 8353G61 | 3/8 | 1 1/2 | ins. | 6.28 | 5.16 | 5.08 | 2.78 | 1.61 | 5.38 | 0.44 |
| | | | mm | 159.5 | 131.0 | 129.0 | 70.6 | 40.9 | 136.5 | 11.1 |
| 8353G50 | 3/4 | 2 | ins. | 8.25 | 6.63 | 6.47 | 3.75 | 2.56 | 6.50 | -- |
| | | | mm | 209.6 | 168.3 | 164.3 | 95.3 | 65.1 | 165.1 | -- |
| 8353G51 | 3/4 | 2 1/2 | ins. | 8.25 | 6.63 | 6.47 | 3.75 | 2.56 | 6.50 | -- |
| | | | mm | 209.6 | 168.3 | 164.3 | 95.3 | 65.1 | 165.1 | -- |



Constr. Ref. 6

