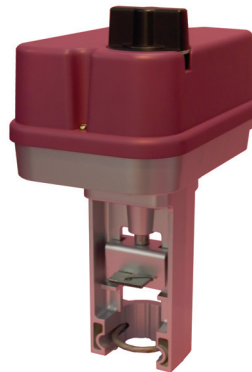


# Linear valve actuator

Modulating/2-position control, 20mm stroke

**EAV2..0...**

## Application

---

Operation of seat valves series EVG/EVF26...E with 20mm stroke.

Modulating control is effected by means of a standard 0(2)...10Vdc / 0(4)...20mAdc (by external wiring) control signal; it can also operate as 2-position control function by different wiring.

## Design features

---

- Simple attachment to the neck of the valve by means of a clamping strap.
- The actuator is short-circuit-proof and protected against polarity reversal.
- Selectable 0...10/2...10Vdc control input signal.
- Built-in manual operating knob for emergency purpose.
- The stroke of the valve is indicated mechanically on the mounting bracket.
- Electronic end position detecting circuit protection and is also over load-proof.

## Types and operating data

---

Type	Supply (+15...-10%)	Function	Stroke (mm)	Actuating force
<b>EAV22.024S</b>	24Vac	Modulating	20	400N
<b>EAV22.024</b>	24Vac	Modulating	20	800N
<b>EAV23.024</b>	24Vac	Modulating	20	1500N

\* **EAV2..0../L** Actuator as above, but with special neck and spindle which adapt to Siemens 20mm stroke valves.

## Ordering information

---

When ordering, please give quantity, designation and type code.

**Example: 1pc, Modulating linear valve actuator, 800N, EAV22.024**

## Technical data

Power consumption	- EAV22.024S	5 watt
	- EAV22.024	7.5 watt
	- EAV23.024	12 watt
Control signal		0(2)...10Vdc
Measuring voltage U		0...10Vdc., 0.5mA
Stroke		20mm
Running time	- EAV22.024	30s
	- EAV23.024	60s
Protection degree		IP54
Permissible ambient condition		
	- Operation	0°C...50°C
	- Storage	-40°C...80°C
	- Humidity test	To EN 60730-1
Weight	- EAV22.024/024S	2.3kg
	- EAV23.024	2.6kg

## Approvals

 Conformity to	- EMC directive	89/336/EEC, 93/68/EEC
	- Low voltage directive	73/23/EEC

## Connection diagram

	+	1	System phase (24V ac)
	-	2	System neutral
	Y	3	Control signal 0(2)...10V dc
	M	4	Neutral
	U	5	Measuring Signal 0...10V dc
	B	6	Override signal input

## Dimensions

