

**IBH softec**

**IBH Link**

**IBH softec**

**S7  
PCI315**

**S5  
for Windows®  
S7  
for Windows®**

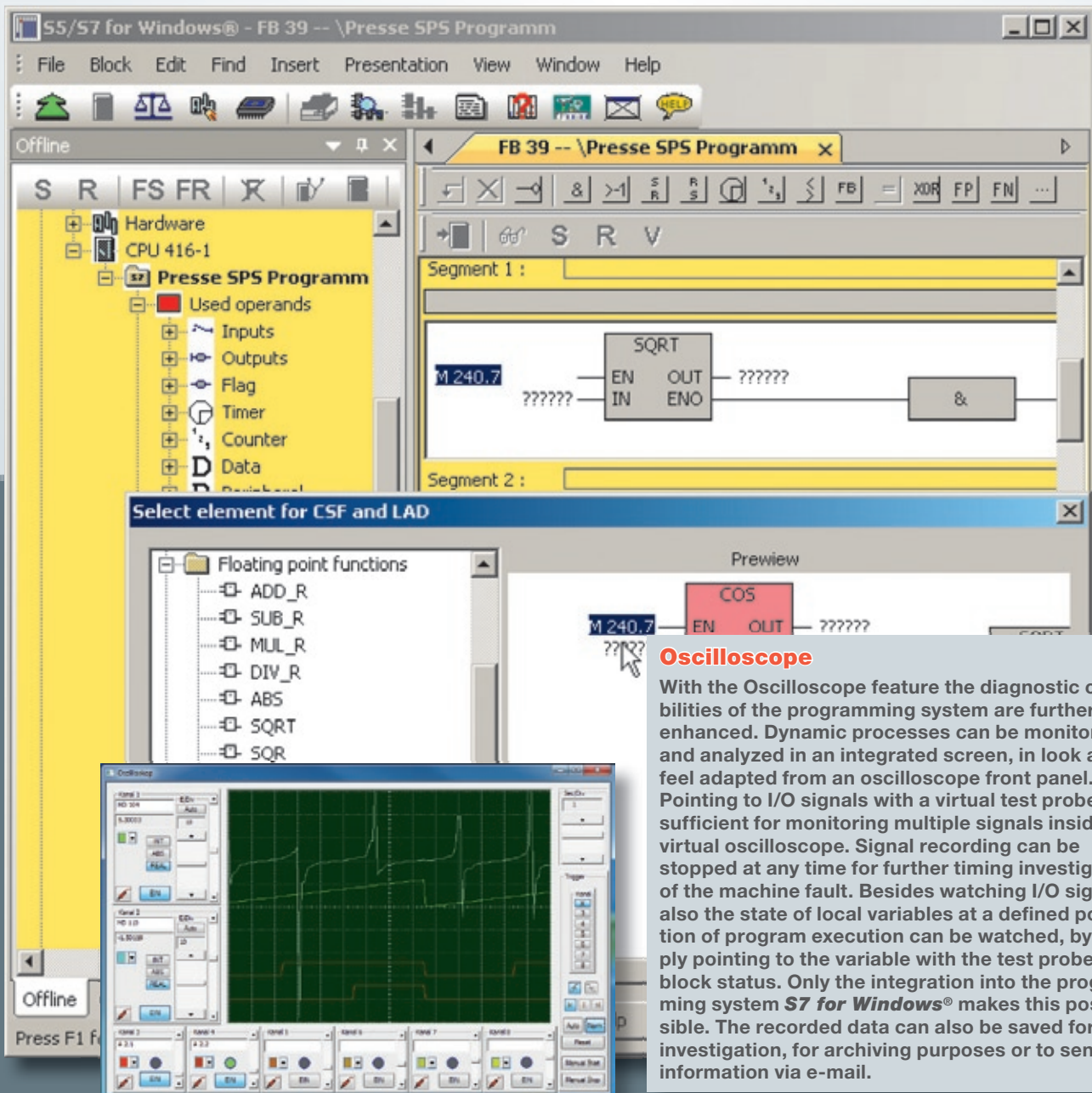
***The World of S5/S7***

# S7 for Windows®

## Programming system for S7-PLC-controls

In order to program the Siemens PLC-control series® S7-300® and S7-400® efficiently and comfortably, IBHsofttec provides the software **S7 for Windows®**. This software can be combined with **S5 for Windows®** or runs stand alone. With **S7 for Windows®** the entire SIMATIC® S7-300® and S7-400® PLC-control series can be programmed. The complete S7 instruction set is implemented in the presentations Statement List (STL), Function Block Diagram (FBD) and Ladder Diagram (LAD).

Of course all online-functions are implemented. The new operational concept of version 6 has been developed on the basis of the latest cognitions in operator guidance. Block lists and symbolic tables for example can be arranged freely, they can be drawn in any order from the main window onto a second screen and can be faded out automatically from the main window, in order to gain more space on the screen. The presentation of the module parameters has been adjusted as well.



## Oscilloscope

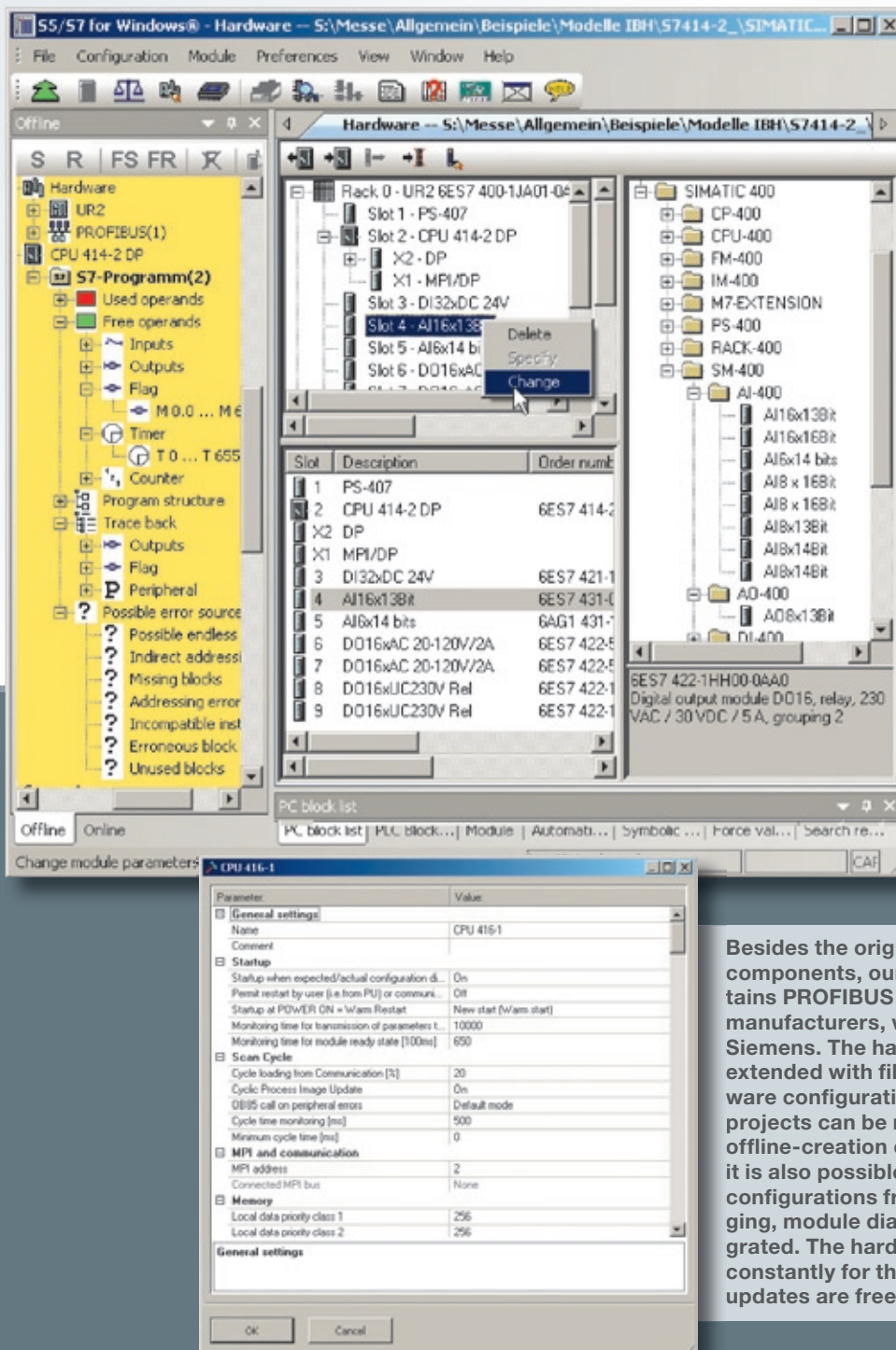
With the Oscilloscope feature the diagnostic capabilities of the programming system are further enhanced. Dynamic processes can be monitored and analyzed in an integrated screen, in look and feel adapted from an oscilloscope front panel. Pointing to I/O signals with a virtual test probe is sufficient for monitoring multiple signals inside the virtual oscilloscope. Signal recording can be stopped at any time for further timing investigation of the machine fault. Besides watching I/O signals, also the state of local variables at a defined position of program execution can be watched, by simply pointing to the variable with the test probe in block status. Only the integration into the programming system **S7 for Windows®** makes this possible. The recorded data can also be saved for later investigation, for archiving purposes or to send the information via e-mail.

# S7 for Windows®

## Hardware configuration

The hardware configuration allows the parametrizing of modules, the allocation of addresses and the configuration of a PROFIBUS. By clicking on the module in the configuration, a dialogue opens,

which allows to setup the module parameters. In the detail window of the module or CPU, executed changes are marked clearly, in order to avoid unintentional changes before saving.



Besides the original Siemens PROFIBUS components, our hardware catalogue contains PROFIBUS components from other manufacturers, which are compatible to Siemens. The hardware catalogue can be extended with files in GSD-format. The hardware configuration of existing STEP®7 projects can be read and edited. Besides offline-creation of hardware configurations, it is also possible to read and edit existing configurations from a PLC. For quick debugging, module diagnostic functions are integrated. The hardware catalogue is updated constantly for the latest modules. These updates are freely available via internet.

# S7 for Windows®

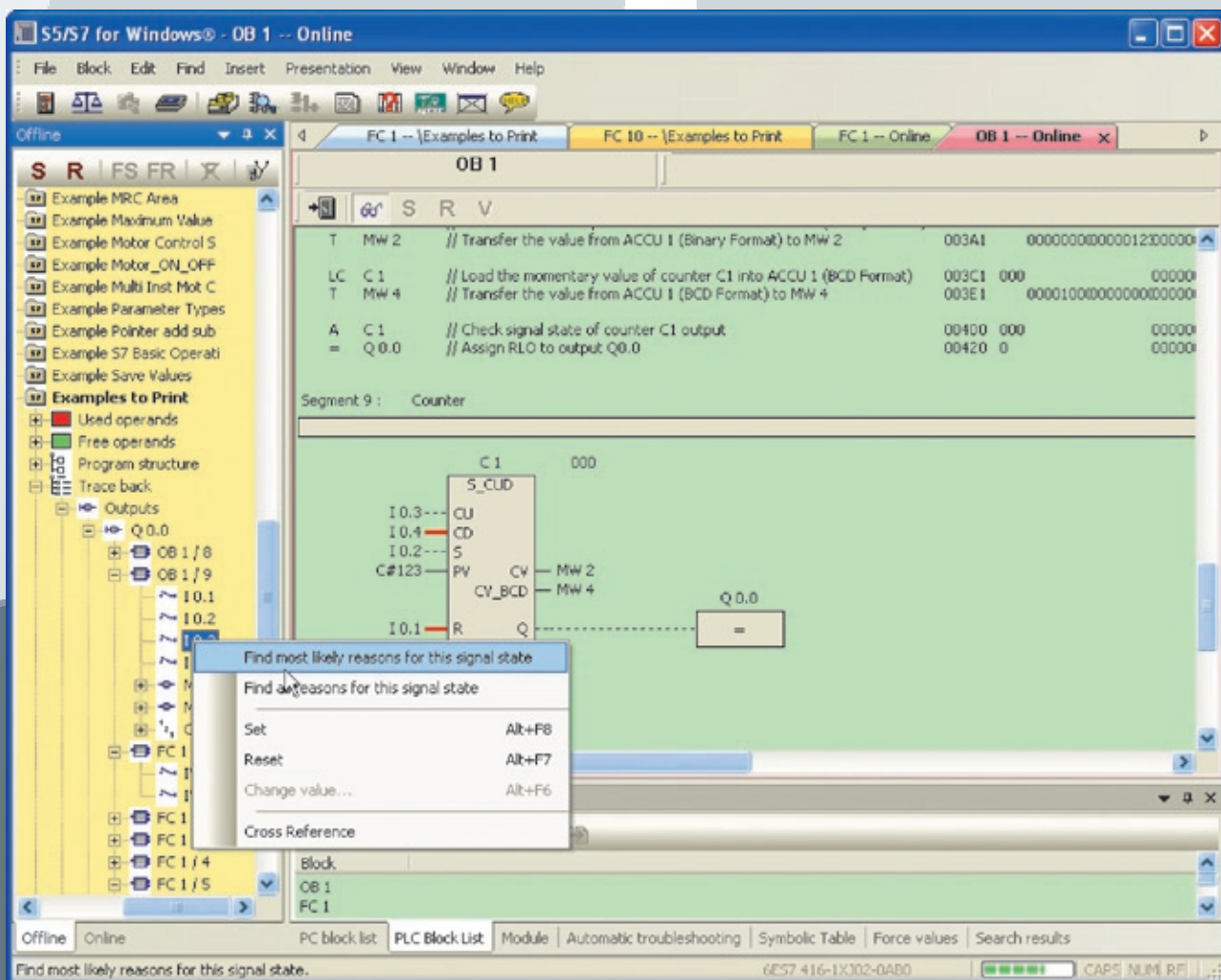
## Program test during online operations

With **S7 for Windows®** the entire S7 instruction set can be shown in the representation STL (Statement List) in status view. The status operation is also possible in the representations Function Block Diagram (FBD) and Ladder Diagram (LAD). Furthermore, variable views and symbolic tables are integrated in the status window. All installed interfaces capable of connecting to a PLC are displayed in the online view.

during debugging and returns the reason for the stop in plain text. In contrast to conventional diagnostic tools, no special adaptation of the PLC program is necessary.

## Other improvements

All STEP®7-projects can be edited directly without im-/export. Archived STEP®7-projects can be opened directly. All write accesses on the PLC can



## Integrated S7-Simulation, BlockDiff and automatic troubleshooting

**S7 for Windows®** contains **S7-Simulation** and the comfortable block comparison (**BlockDiff**). The functions for an automated troubleshooting are integrated as well. The **S7 for Windows®** allows a fully automated debugging in the running PLC program. Compared to the classical debugging, the **S7 for Windows®** performs all the tasks required

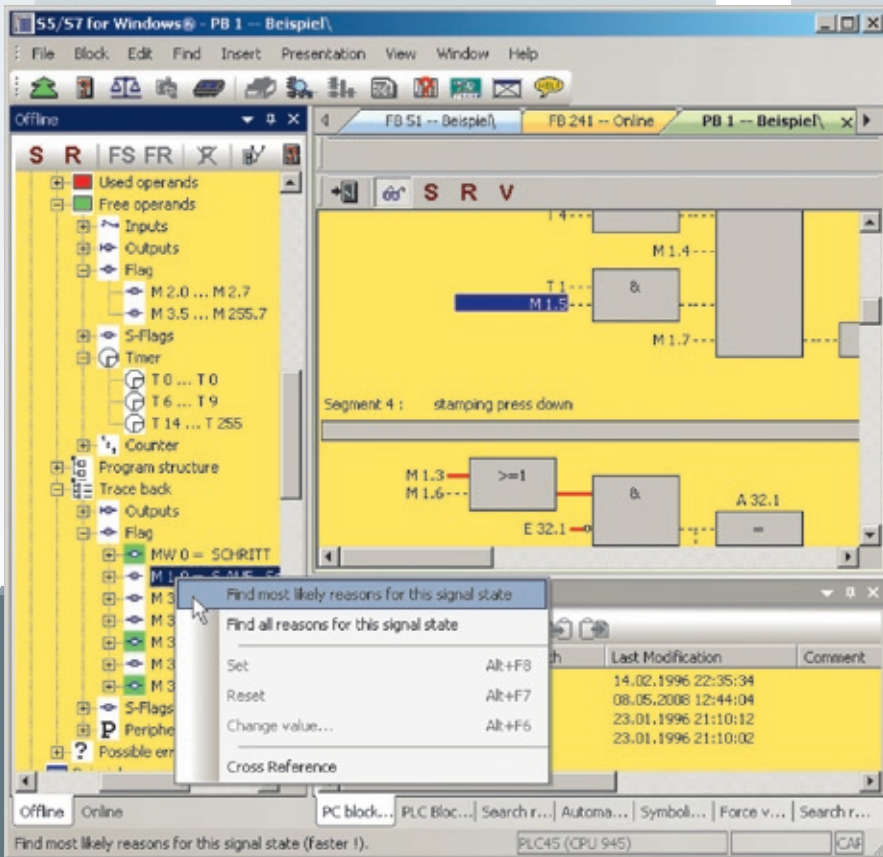
be prevented with a password protection. Signals (operands) traceability is possible. Cross-reference over complete IO modules and hardware or module diagnostics are also possible. The print preview and the forcing of operands are implemented as well. The conversion from S5- to S7-programs has been optimized. Saving of complete S7-projects on a memory-card is also possible (CPU dependent).

# S5 for Windows®

## Programming system for S5 PLC controls

**S5 for Windows®** provides the tools for creating, modifying, testing and documenting programs for programmable logic controllers (PLC). **S5 for Windows®** is designed for programming the Siemens PLC family SIMATIC® S5 with STEP®5. The Function Block Diagram (FBD), the Ladder Diagram (LAD), Statementlist (STL) and Graphical Step Sequence (**G5 for Windows®**, Graph5®, Graph5/II®) are used as presentations for S5. Existing S5 programs can be edited directly without im-/export. **S5 for Windows®** is compatible to the original Siemens programming unit. The functions for automatic troubleshooting of **S7 for Windows** are also integrated in **S5 for Windows**.

the keyboard. Cross references and/or the corresponding symbol files are shown with the correct addresses. In this window the symbol file can be edited simultaneously. The allocation of new addresses with syntax check is integrated. Statement lists are created with the comfort of the integrated editor. The assignment of new addresses with syntax check is integrated. The Windows® clipboard can be used for program or configuration manipulations in any place. Statement lists can be altered into function block or ladder diagrams, as far as they are displayable. The display of Function Block Diagrams and Ladder Diagrams in form of Statement Lists is always possible.



## Create and correct

A comfortable editor to create and edit symbolic tables is integrated. Searching and replacing for any criteria as well as rewiring are possible. A syntax check is integrated. The new comfortable multiple segment editor for the creation of statement lists, function block diagrams and ladder diagrams allow the representation of complex functions too. Focus was set on the easy use with the mouse and/or

## Program test during online operations

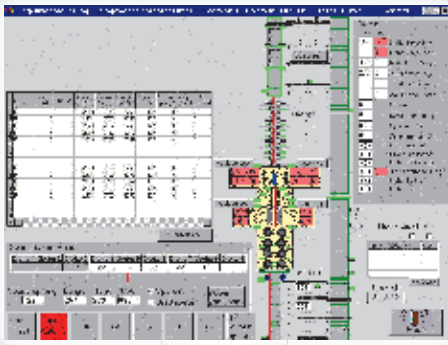
With **S5 for Windows®** multiple segments can be shown in the status display representations statement list, function block diagram and ladder diagram. The CPU status function provides information about interrupt stack, block stack and system data.

## Calling the COM packages

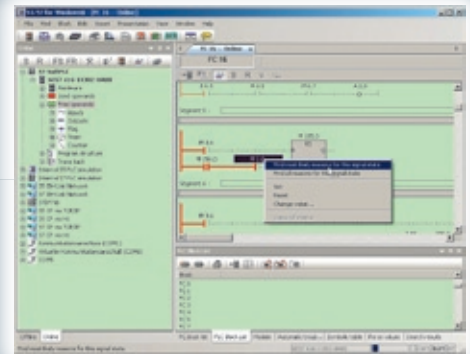
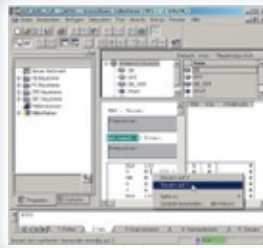
**S5 for Windows®** allows calling the COM packages (Windows® 2000 and XP only). Communication to a PLC can be established via an USB adaptor for instance.

## Oscilloscope

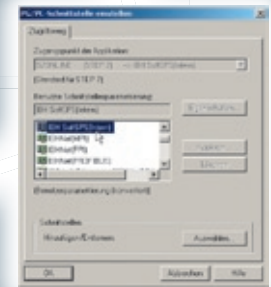
The Oscilloscope functionalities of **S7 for Windows®** are also integrated in **S5 for Windows®**.



**OPC-Access  
and  
DLL-Access**



**Internal  
Siemens Online  
Interface**



**Ethernet**



**PLC ↔ PLC  
Communication**



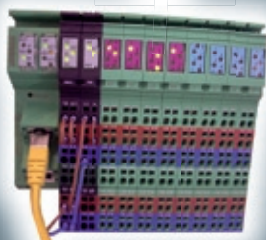
**Profinet  
IO**



**AS-Interface  
CANopen**



**Modbus TCP  
InterBus**



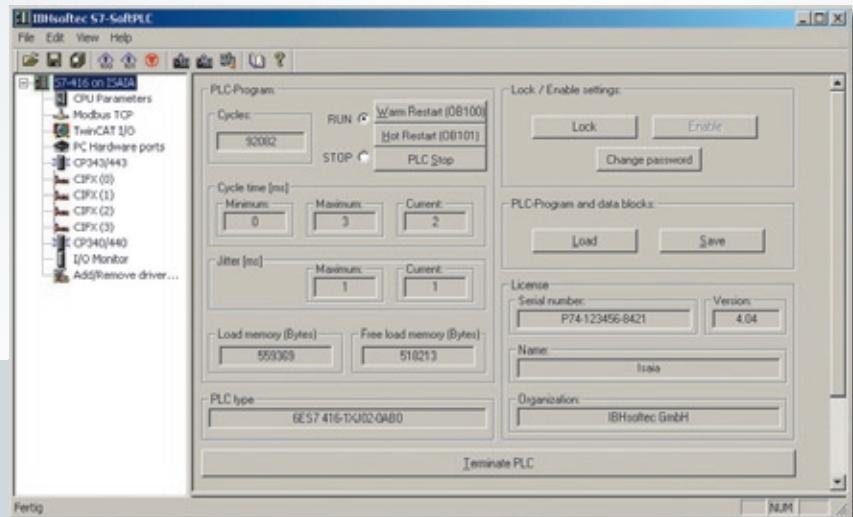
**Profibus DP  
DeviceNet**



**EtherCAT, Fipio,  
CC-Link, LON, EIB**



# SoftPLC S7-315®/S7-416®



The **SoftPLC S7-315/S7-416** executes a program in the same manner as a hardware PLC. The advantage of executing a PLC program this way is, that the PLC status can be displayed in real time. Since the **Soft PLC** behaves like a original SIMATIC® PLC, the programming tools **S7 for Windows®** and STEP®7 can be used. Online connections can be established serial, via Ethernet, via PROFIBUS DP and directly on the same PC. Even for project engineering and diagnostics of the PROFIBUS DP **S7 for Windows®** or the original STEP®7 tool can be used. The program of a S7-PLC or a Siemens Win AC® SoftPLC including PROFIBUS DP configuration can be transferred to the **SoftPLC S7-315/S7-416**.

## Operating systems

To meet the demands of our customers and provide flexibility, a variety of hardware and software platforms are available that are supported by the **SoftPLC**. The S7 version can be installed on systems using Windows® 2000/XP XP Embedded, Vista and Win 7. For OEM applications, also a Windows® CE version is available for almost every CPU architecture.

## SoftPLC I/Os

The **SoftPLC** can access standard I/O boards as well as numerous intelligent hardware boards available to control bus systems widely used in the industry. Also a driver for Modbus TCP is included. Modbus TCP is used by companies like Wago and Phoenix Contact. PROFINET IOs, as well as a wide range of nodes for other bus systems can be used.

## Supported Fieldbussystems

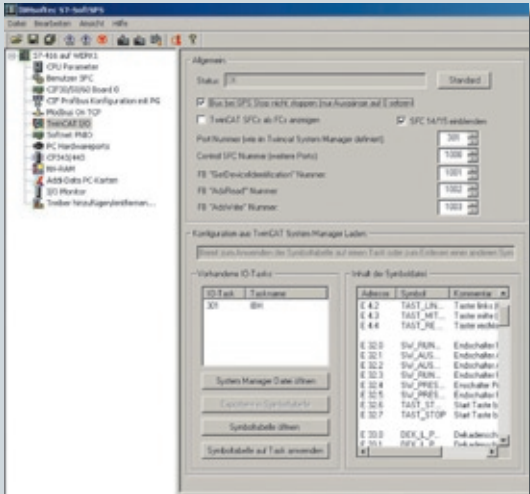
Fieldbuscard/-system	Hilscher	Beckhoff
Lightbus	-	✓
PROFIBUS	✓	✓
PROFINET IO	✓	-
INTERBUS	✓	✓
DeviceNet	✓	✓
AS-i	✓	✓
CAN	✓	✓
SERCOS	✓	✓
EtherCAT	✓	✓
EtherNet/IP	✓	-
ControlNet	-	✓
Fipio	-	✓
CC-Link	-	✓
LON	-	✓
EIB	-	✓
MP-Bus	-	✓

## SoftPLC S5-943 / S5-945

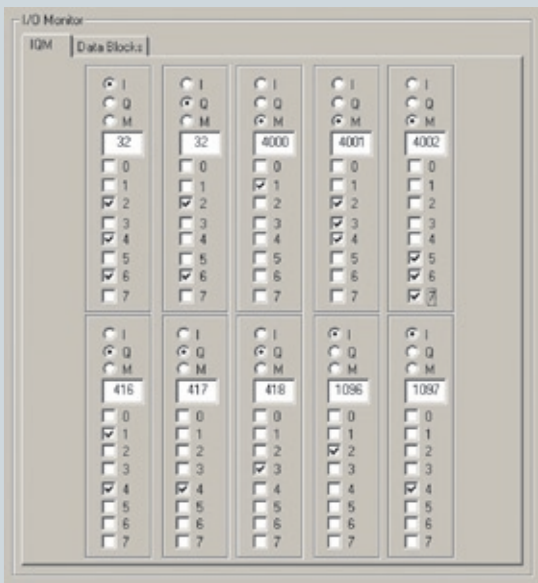
The **SoftPLC** is also available as S5 version. Since the **SoftPLC** behaves like a original SIMATIC® PLC, the programming tools **S5 for Windows®** and STEP®5 can be used. Access to the field bus can be made with the Hilscher-CIF cards over PROFIBUS-DP, INTERBUS, AS-I Bus, Device-Net and CAN. With a TwinCAT I/O driver it is possible to use any Beckhoff field bus master.

# SoftPLC S7-315®/S7-416®

The configuration of the fieldbus is very comfortable:



Signal state watching and modification of the I/Os is simplified by the integrated IO monitor:



## Online-Functions

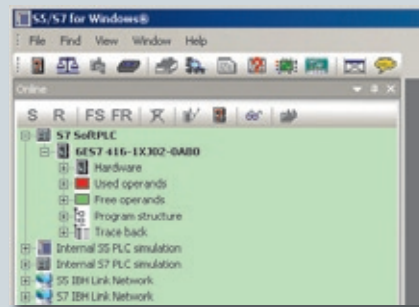
Direct Online Access with **S7 for Windows®** or **STEP®7**. Data exchange with the **SoftPLC** can be established with **S7 for Windows®** or Siemens **STEP®7**. If the programming system is installed on the same PC, the **SoftPLC** can be reached directly. All necessary drivers are included.

Alternatively data exchange can be established via serial interface using a zero-modem cable.

Furthermore it is possible to access the **SoftPLC** via TCP/IP Ethernet using the **IBHNet** driver.

Online functions are also possible using the Siemens ISO on TCP (RFC1006) protocol.

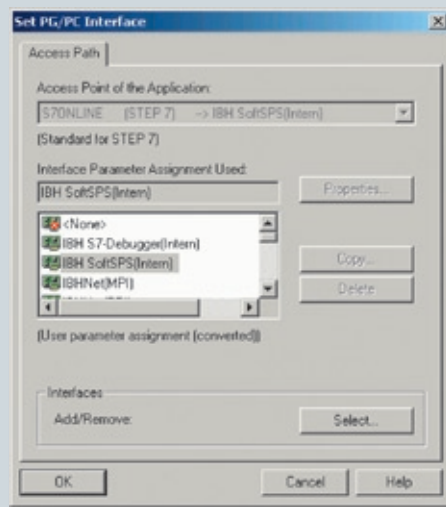
If a Hilscher CIF30/50/60 or CIFX PROFIBUS master card is used, the **SoftPLC** can be programmed or reached from an operator panel via the connected PROFIBUS, if the drivers are correctly configured.



## Direct Online Access with **S7 for Windows®** or **STEP®7**

Data exchange with the **SoftPLC** can be established with **S7 for Windows®** or Siemens **STEP®7**.

If the programming system is installed on the same PC, the **SoftPLC** can be reached directly. The necessary drivers are included.





# SoftPLC S7-315®/S7-416®

## Accessing S7-SoftPLC over IBHNet with STEP®7

If the **IBHNet** driver is installed on the PU, **S7-Soft-PLC** can be programmed via Ethernet. The **IBHNet** protocol is always active on **S7-SoftPLC**, this way no configuration is necessary. In the **IBHNet** station, which is configured on the programming unit, only the IP-address of the computer, which is executing **S7-SoftPLC**, needs to be entered.

## Accessing S7-SoftPLC over TCP/IP with STEP®7

In the hardware configuration of the SIMATIC® Manager a CP has to be added to the hardware configuration. In the IP-address-field of the CP, the IP address of the computer with **S7-SoftPLC** must be set.

## Accessing S7-SoftPLC over PROFIBUS® with STEP®7

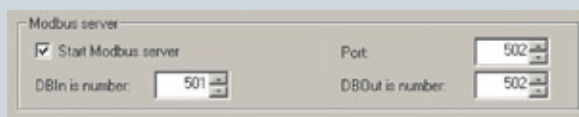
In the same manner as it is with a hardware PLC the PROFIBUS needs to be configured first. In the case of **S7-SoftPLC** this can happen directly, serial or via TCP/IP. If the PROFIBUS® is operational, it is possible to activate the option „OnlineDP“ in the driver configuration to allow an access to the PLC via PROFIBUS®.

## Monitoring, Operating, and Controlling simultaneously from one PC

The **SoftPLC** allows process monitoring, operation, and control from one hardware unit. The use of the **SoftPLC** is especially useful if a PC for data collection, process visualization, programming, or any other reason needs to be used anyway. A **SoftPLC** solution eliminates the need for a hardware PLC and the corresponding communication processor.

## Access with IBH OPC Server/IBHNet/RFC1006/DLL/Modbus TCP Server

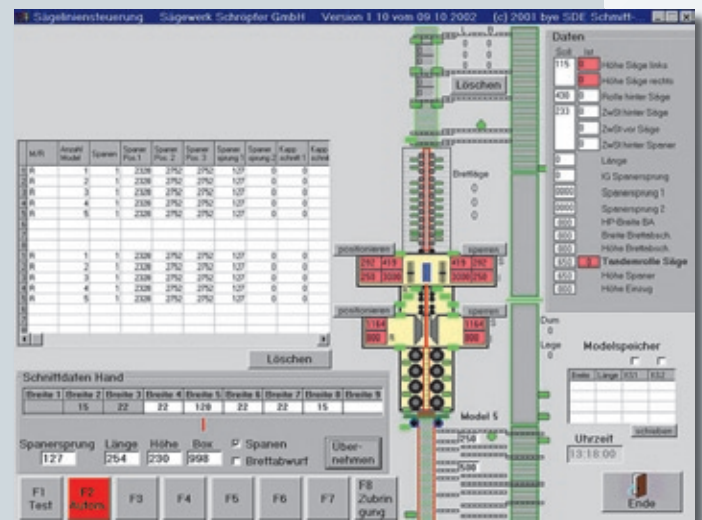
The **S7 SoftPLC** has an integrated Modbus TCP-Server, which is supported by numerous visualization software suppliers.



## S7 Simulation PLC

The **SoftPLC** is also available as a pure Simulation-PLC. The **S7 Simulation PLC** also has the ModbusTCP- and CP-functionality integrated.

With the **IBH OPC Server** a communication via Ethernet to the **S7 SoftPLC** as well as a direct communication in the same PC can be established.



For fast data transfer between the **SoftPLC** and other Windows® applications, a DLL is available. Examples for the usual programming tools are supplied.

## PLC - PLC communication

A data exchange between several PLC controls via Ethernet is possible. The **SoftPLC** contains a communications processor, which is compatible to the Siemens CP343/CP443. Send/Receive connections between two **SoftPLCs**, between **SoftPLC** and for example Siemens PLCs can be realized. The configuration is made using the STEP®7 tool NetPro®.

The following protocols are supported:

- ISO on TCP PU channel (PU, ProTool, WinCC, compatible **OPC Server** etc.)
- ISO on TCP Send/Receive passive
- ISO on TCP Send/Receive active
- ISO on TCP Fetch/Write passive
- TCP Send/Receive passive
- TCP Send/Receive active
- TCP Fetch/Write passive
- UDP Send/Receive

## Additional Functions

The PC environment offers additional functions, which go beyond the usual S7 instructions. So own functions blocks, programmed in C++ can be integrated. This gives the possibility to program hardware drivers for customized I/O without large development.

# IBH OPC Server

## Connection between visualization and SIMATIC® PLC

With the **IBH OPC Server** a visualization application can be linked with a SIMATIC® PLC S5, S7-200®, S7-300® and S7-400® or an IBHsofttec **SoftPLC**. Also a mixed operation is possible.

Access to the variables of a PLC Control via OPC. The symbolic addressing used within the PLC program and the Data Blocks can directly be used within the HMI. With a few mouse clicks all or only the desired variables from the PLC can be selected. The following file formats are supported:

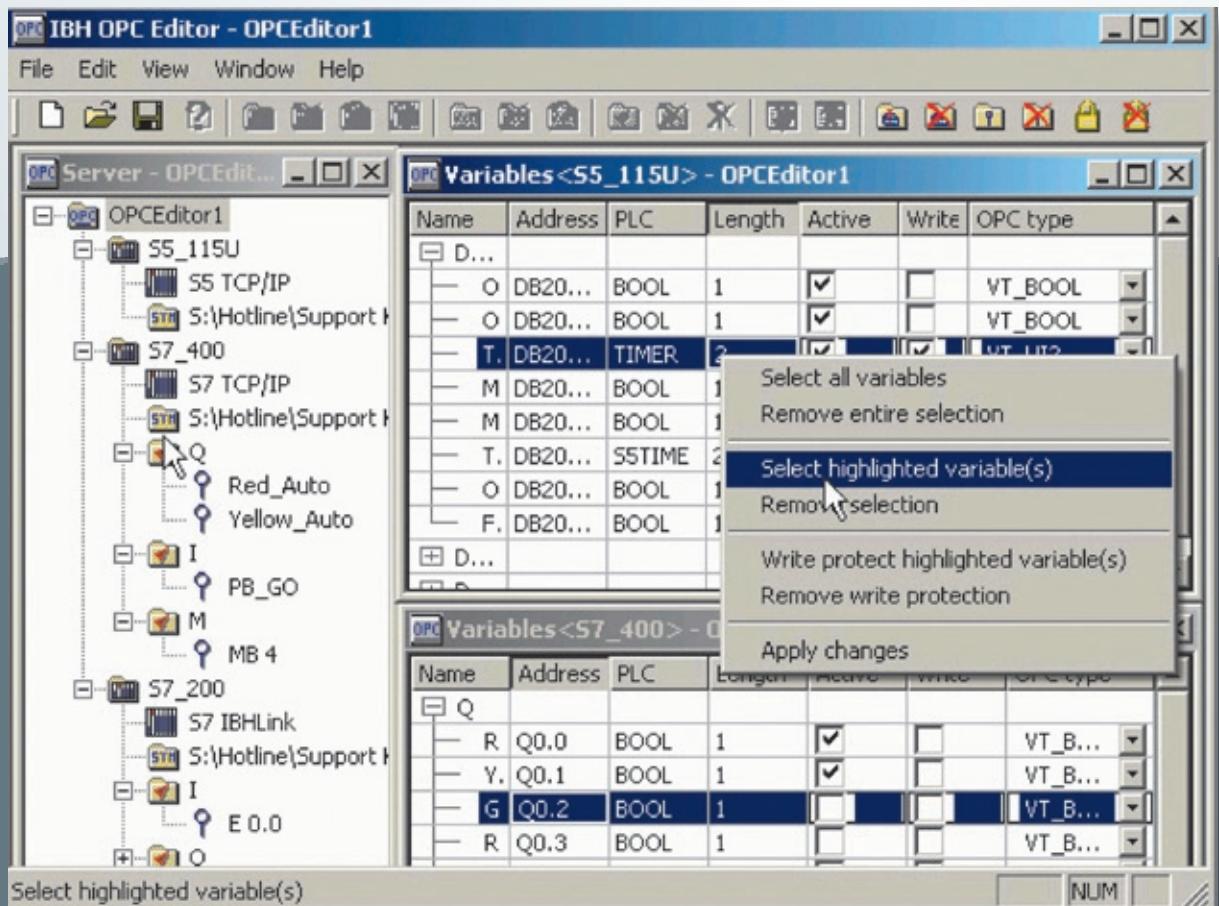
**S5 for Windows®**, **S7 for Windows®**, STEP®5 and STEP®7.

The symbolic addressing used within the PLC program and the Data Blocks can directly be used within the HMI.

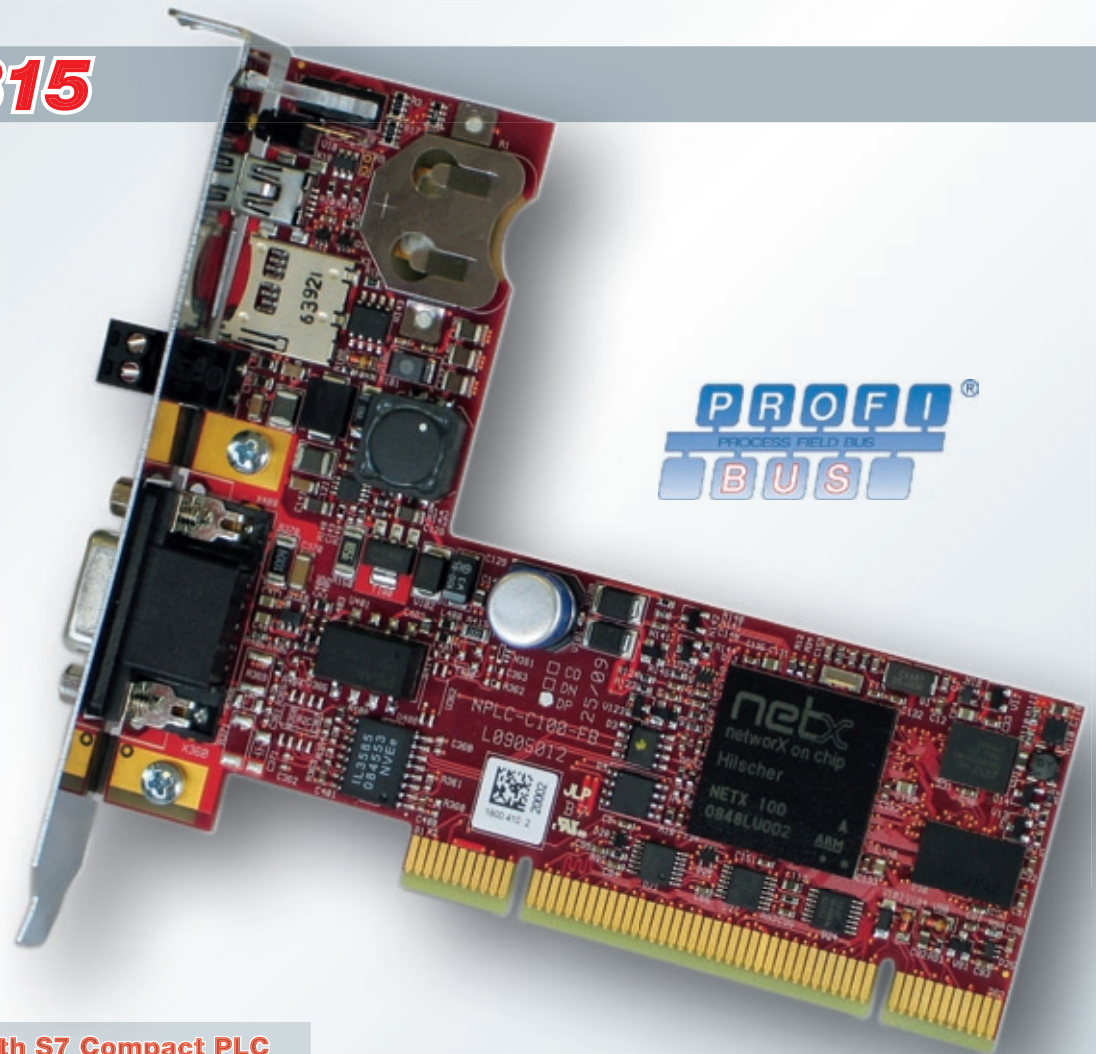
## The communication between the IBH OPC Server and the Siemens PLCs can be established via:

- S5-AS511
- S5-TCP/IP
- **IBH S5 SoftPLC**
- S7-300®/400® via PROFIBUS/MPI® using a PC Adaptor (serial/USB)
- **IBH S7-CX315/CX317** over RFC1006/**IBHNet**
- S7-200®/300®/400® via **IBH Link**
- S7-1200® over **Ethernet**
- S7-200 via CP243®
- S7-200 PPI® (serial/USB)
- **IBH S7 SoftPLC**
- S7-TCP/IP via Ethernet
- The STEP®7-Online Interface (SIMATIC NET) can also be used
- With an optional driver it is possible to communicate via S5-H1 and S7-H1.

Routing functions to PLCs in subnets are also supported.



# S7-PCI315



## PCI Add On Card with S7 Compact PLC and programming tool

The **S7-PCI315** executes a program in the same manner as a Siemens PLC. The advantage of executing a PLC program this way is, that the PLC status can be displayed in real time. Since the **S7-PCI315** behaves like a original SIMATIC® PLC, the programming tools **S7 for Windows®** and STEP®7 can be used. Even for project engineering and diagnostics of the PROFIBUS DP, **S7 for Windows®** or the original STEP®7 tool can be used. The program of a S7-PLC or a Siemens Win AC® SoftPLC including PROFIBUS DP configuration can be transferred to the **S7-PCI315**.

- **S7 for Windows** (KIT-Version) included
- STEP®7 compatible
- PROFIBUS-DP-Master
- PCI Card
- Stand alone operation with external power supply
- PU functions with STEP®7 or **S7 for Windows®** via PROFIBUS-DP, USB, Ethernet or directly
- Operator panels (OPs) and PU devices can be connected in the usual way to PROFIBUS-DP
- HMI applications can connect via PROFIBUS-DP, USB, Ethernet or directly
- HMI applications can connect via the optional **IBH OPC Server**
- Proven a thousand times, any PROFIBUS-DP module can be used

RAM:	256 KB
Load memory:	256 KB
Retain memory:	all data
Processing time:	0,2µs/Instr.

# The PLC, that connects two worlds

The Powerful **S7-CX317** and the Low-Price **S7-CX315** are S7 compatible PLCs based on Beckhoff hardware.

For the **S7-CX** a free programming tool is included.

Since the **S7-CX** series behaves like a original SIMATIC® PLC, the programming tools **S7 for Windows®** and STEP®7 can be used. Online connections can be established via Ethernet. The **S7-CX** executes a program in the same manner as a hardware PLC. The program of a S7-PLC can be transferred to the **S7-CX** series.

As hardware platform for the **S7-CX**, the modular DIN rail PCs of the **CX** series of the Beckhoff Automation GmbH is used. The fieldbus used to control the central and the distributed IO primarily is EtherCAT (Real-Time Ethernet).

## Technical data:

### RAM:

**IBH S7-CX315:** 256 KB

**IBH S7-CX317:** 16 MB

### Load memory:

**IBH S7-CX315:** 256 KB

**IBH S7-CX317:** 4 MB

### Retain memory:

**IBH S7-CX315:** 64 KB

**IBH S7-CX317:** 64 KB

### Processing time:

**IBH S7-CX315:** 0,20 µs/Instr.

**IBH S7-CX317:** 0,075 µs/Instr.

### Dimensions:

**IBH S7-CX315:** 59 mm x 100 mm x 91 mm

**IBH S7-CX317:** 59 mm x 100 mm x 91 mm

### Internal Bus system of the CPU:

EtherCAT(E-Bus)

- PU functions with STEP®7 or **S7 for Windows®** over Ethernet with the ISO on TCP (RFC1006) or the **IBH Link** protocol.
- Online connections via PROFIBUS DP are possible with the Beckhoff PROFIBUS Master EL6731. Operator panels (OPs) and PU devices can be connected in the usual way to PROFIBUS DP.
- HMI applications can connect via ISO on TCP (RFC1006), the **IBH Link** protocol or via the optional **IBH OPC Server** for the visualization PC.
- Diagnostics and HMI via Intranet/Internet with the integrated web server.
- PLC to PLC communication via the integrated Ethernet CP.
- Based on the reliable and flexible Beckhoff hardware.



EtherCAT®

- In conjunction with the Beckhoff TwinSAFE modules, safety functions (f.i. emergency stop) can be realized very easily and cost-efficient with the **S7-CX315** and **S7-CX317**.
- Using the EtherCAT technology, it is possible to integrate other fieldbus segments, as for instance PROFIBUS DP, CANOpen, AS-i, DeviceNet, ControlNet, Modbus, Fipio, CC-Link, EtherNet/IP, and SERCOS interface at any place of the EtherCAT network.
- For the operation in building automation, the bus systems LON, EIB, MP, as well as DALI are available.
- Special functions for the peripheral devices (ADS functions) can be called via integrated function blocks.

### S7-CX315/S7-CX317

Data exchange with the **S7-CX PLC** can be established with **S7 for Windows®** or the Siemens SIMATIC® manager.

Furthermore it is possible to access the IBHsoftec **S7-CX PLC** via TCP/IP Ethernet using the **IBHNet** driver.

Online functions are also possible using the Siemens ISO on TCP (RFC1006) protocol (a standard protocol within STEP®7 and **S7 for Windows®**).

# The S7-compatible PLC based on Beckhoff-hardware with EtherCAT

## PLC - PLC communication:

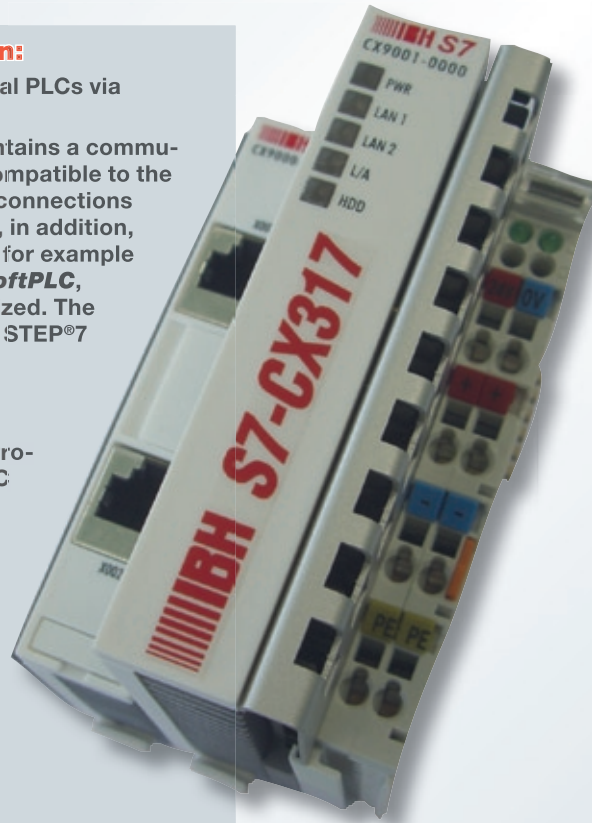
A data exchange between several PLCs via Ethernet is possible.

The IBHsoftec **S7-CX** series contains a communications processor, which is compatible to the Siemens CP343. Send/Receive connections between two **S7-CX** controllers, in addition, between **S7-CX** controllers and for example Siemens PLCs or a IBHsoftec **SoftPLC**, which runs on a PC, can be realized. The configuration is made using the STEP®7 tool NetPro®.

The following protocols are supported:

- ISO on TCP PU channel (PU, Pro-Tool, WinCC®, compatible OPC server etc.)
- ISO on TCP Send/Receive passive
- ISO on TCP Send/Receive active
- ISO on TCP Fetch/Write passive
- TCP Send/Receive passive
- TCP Send/Receive active
- TCP Fetch/Write passive
- UDP Send/Receive

The **S7-CX** PLCs unites the worlds of industrial PC and hardware PLC and fulfils the criteria for Programmable Automation Controller. Depending on the task, the components of the modular control




system can be plugged together and be built like a PLC into the switch cabinet or terminal box. The S7-compatible **S7-CX** controllers support the Beckhoff fieldbus terminals and also the EtherCAT terminals via the appropriate IO interfaces as IO system. This offers the opportunity to use the entire range of the open and fieldbus-neutral Beckhoff IO system.

The **S7-CX PLC** will be supplied preconfigured, so it is immediately ready to use.

With the Beckhoff System Configurator, the variety of the Beckhoff I/O terminal modules can be configured.

The user takes benefit from a flexible automation system and can take advantage of the wide-spread S7-programming tool.

# IBH Link S7++ / IBH Link S7 Plus / IBH Link S5++

## IBH Link S7++

If a S7 200®, S7 300® or S7 400® has to be connected with a PC via Ethernet, the normal way is to take a CP / Communication processor. IBHsoftec has a more flexible solution:

If you want to connect your PC via Ethernet just take the **IBH Link S7++**. It is possible to connect the **IBH Link S7++** with a hub or switch or via a Crossover cable directly with your PC network card. The used protocol is standard TCP/IP, so you can control your system using VPN or a router. Of course, you can also use an Internet connection. With the **IBH Link S7++** online functions are possible via Profibus DP with up to 12 Mbit/s or via PPI/MPI®. The **IBH Link S7++** will reduce your costs because there is no need for the CP's from Siemens nor the software Simatic Net is required.

The driver for SIMATIC MicroWin®, STEP®7, WinCC, ProTool and, of course, **S7 for Windows®** is supplied on CD with your **IBH Link S7++**. Also you can use the **IBH OPC Server** to connect your visualisation on the PLC via **IBH Link S7++**. The

**IBHNet** driver enables you to gain direct variable access via standard programming languages like

Visual Basic or Delphi.

The configuration of the adapter is very easy and normally done in a few minutes. The **IBH Link S7++** automatically detects, whether it's

connected to a 10 or 100Mbit/s network. The

**IBH Link S7++** takes its power supply from the MPI® / DP interface, if available, otherwise via the integrated 24V connector.

Besides the programming capabilities also an application programming interface for HMI applications is included.

For Windows operating systems there are samples in the languages Visual Basic®, Visual C®, C++®, VB.net®, C#®, Delphi®, Java®, Excel® included. For Linux there are also samples included.



HMI applications can also connect via ISO on TCP (RFC1006).

- 16 PC-connections at the same time
- 32 MPI® / DP-connections at the same time
- Automatic Baudrate-detection
- RFC1006
- RJ45-plug with autodetect integrated
- PG(PU) connector
- Diagnostic LEDs
- Power supply from the MPI® / DP interface
- Connection also to passive nodes with power supply via integrated 24V connector

## IBH Link S7 Plus

The **IBH Link S7 Plus** has a rail mount.

## IBH Link S5++

Cost-efficient alternative solution for conventional PLC-PC-connections via Ethernet

If a PLC has to be connected via Ethernet with a PC, usually a CP communication processor needs to be applied to the PLCs rack.

In general, the communication processors (e.g. CPs from Siemens, or Ethernet components from other manufacturers) are used for the connection to the PLC.

As an alternative solution, IBHsoftec has recently introduced the **IBH Link S5++** for connecting a PLC with a PC. The **IBH Link S5++** is a compact and robust Ethernet-converter within a 15-pin Sub-D-housing for a connection via a switch, a hub or even directly to a PC with a common network adaptor.

All required drivers for the STEP® 5 V7.16 or higher and for **S5 for Windows®** are included. Furthermore the protocols Fetch/Write TCP and RFC1006 passive are supported.

Since many new S7 HMI panels do not support the S5 anymore, the **IBH Link S5++** talks the S7 RFC1006 protocol in order to connect this new devices to S5.



# S5/S7 Interfaces

## USB-S7-Adaptor MPI®, DP, PPI

The USB-S7-Adaptor MPI®, DP, PPI is an USB interface to the MPI®/PPI or DP-Bus converter for programming software or HMI. The USB-S7-Adaptor MPI®, DP, PPI has a 1.2m long MPI® connecting cable, which can be directly plugged into the programming socket of the CPU or to any other node in the MPI® network. The LCD Display shows the transmission rate and MPI®/DP address.



The housing of the USB-S7-Adaptor MPI®, DP, PPI contains a type "B" USB socket. The Adaptor can be connected to the PC via the USB cable supplied. The USB-S7-Adaptor MPI® is powered from the PC. The USB-S7-Adaptor MPI®, DP, PPI can be used at any node of the MPI® bus. A driver for Windows® 98/2000/XP is supplied.

## USB-S7-Adaptor (Siemens) MPI®, DP, PPI

The USB-S7-Adaptor (Siemens) MPI®, DP, PPI is an USB interface to the MPI®/PPI or DP-Bus converter for programming software or HMI. The USB-S7-Adaptor (Siemens) MPI®, DP, PPI has a 1.2m long MPI® connecting cable, which can be directly plugged into the programming socket of the CPU or at any other node in the MPI® network.



The housing of the USB-S7-Adaptor (Siemens) MPI®, DP, PPI contains a type "B" USB socket. The Adaptor can be connected to the PC via the USB cable supplied. The required power supply is normally taken from the S7-300® or S7-400® PLCs programming port. The USB-S7-Adaptor (Siemens) MPI®, DP, PPI can be used at any node of the MPI® bus. A driver for Windows 98/2000/XP and Vista is supplied.

## IBH USB-S5-Adaptor

Interfaces the PC USB Port with the 15 pin AS511 Interface port of the PLC. The 15 pin connector housing is made from solid metal and contains the complete electronics. The IBH USB-S5-Adaptor takes it's power supply from the USB port of the PC. It is an active cable, no power supply from the PLCs programming port is required. A Constant Current adaptor is not needed for this reason. The IBH USB-S5-Adaptor can be used with **S5 for Windows®**, the **IBH OPC Server** and **STEP®5 V7.16** or higher (Drivers for Windows 2000, XP, Vista and Win 7 are included).



## IBH S5-Current Loop Converter

The SMD electronics are located in a solid metal 15 pin Sub-D connector shell. The pin assignment fits the following SIMATIC® PLCs: 90U, 95U, 100U, 101U, 115U, 135U, and 155U. The PLC must be active and needs to supply the the loop current (2 x 20mA). The 9 pin Sub-D connector is plugged into the serial port (COM1 – COM4) of the PC.



## Constant Current Adaptor for the IBH S5-Current Loop Converter

For PLCs, that are not supplying the loop current (2 x 20mA), the Constant Current Adaptor is required to establish a connection. Two constant current (20mA) sources are located in the solid metal 15 pin Sub.-D connector shell to supply the loop current. The adapter is delivered with a AC / DC adaptor. The pin assignment matches the pin assignment of the IBH S5-Current Loop Converter .



## USB S5/S7 Prommer (Siemens)

The USB S5/S7 Prommer is used to program S5 Eproms, S5 EEPROMs, S5/S7 Flash Eproms and S7 MicroMemoryCards.

The USB S5/S7 Prommer is connected via the USB port of the PC.

All Eprom functions such as erasing, displaying, reading, transferring, comparing, and erase check are available.

The USB S5/S7 Prommer works together with **S5/S7 for Windows®**, **STEP®5** and **STEP®7**



## EPROM-Eraser LG07

The robust design of this EPROM-Eraser LG07 will withstand even the hardest use. The EPROM-Eraser LG07 has an integrated timer (max. 60 min.) and an indicator to control the erasing procedure. The high power ultraviolet ray lamp has a long life. The ultraviolet ray lamp is turned off if the drawer is opened accidentally. The drawer has roller bearings for easy sliding. Drawer size: 60x90x21mm. The drawer has space for one (1) S5 Eprom Module or up to seven DIP 28 Eprom's. A 230V / 50/60 Hz 12VA power supply is integrated.



# International Distributors



## Australia

**IS Systems Pty Limited**  
Tomago NSW 2322  
Phone +61 2 4964 8548  
Fax +61 2 4964 8877

**ZI-ARGUS Pty. Ltd.**  
Silverwater NSW 2128  
Phone +61 297 48 2722  
Fax +61 297 48 1922



## Austria

**ESA Elektro-Automation GmbH**  
3322 Viehdorf  
Phone +43 7472 630 98 0  
Fax +43 7472 630 98 20



## Belgium

**1731 Zellik**  
Phone +32 248248 48  
Fax +32 248248 49



## Brasil

**Orkan Informática**  
09726 Sao Bernardo  
Phone +55 11 412 56088  
Fax +55 11 412 58811



## China

**Shanghai BOU Trading**  
201200 Shanghai  
Phone +86 21 61508196  
Fax +86 21 58341766



## Czech Republic

**Merz s.r.o.**  
460 01 Liberec  
Phone +420 485 100 272  
Fax +420 485 100 273

**SIDAT s.r.o.**  
158 00 Prag  
Phone +420 257 187 920  
Fax +420 257 187 970



## Denmark

**PC SYS A/S**  
2605 Brøndby  
Phone +45 4343 2929  
Fax +45 4343 2829



## Egypt

**Mas Trading**  
Cairo  
Phone +20 223588218  
Fax +20 223588821



## Finnland

**Klinkmann Automation**  
00371 Helsinki  
Phone +358 9540 4940  
Fax +358 9541 3541



## France

**Pantek Automation SA**  
77700 Marne La Vallée  
Phone +33 16463 4028  
Fax +33 16463 8375

**VIPA France SAS**  
75020 Paris  
Phone +33 14361 5225  
Fax +33 14361 5345



## Great Britain

**Drawtrend Ltd**  
Lancashire FY6 7LD  
Phone +44 125 388 2158  
Fax +44 125 388 2158

**Que Associates Limited**  
Warwick CV34 4HU  
Phone +44 1926 410 371  
Fax +44 1926 410 372



## Hungary

**AD-DA kft**  
1025 Budapest  
Phone +36 1 214 0400  
Fax +36 1 214 0400



## India

**Hilscher**  
110025 New-Delhi  
Phone +91 1140515640  
Fax +91 1140515642



## Ireland

**DC Automation**  
Goatstown Dublin 14  
Phone +353 1 4419187



## Italy

**Icon GmbH s.r.l.**  
39040 Vahrn  
Phone +39 0472 2009 70  
Fax +39 0472 2009 62

**Telestar s.r.l.**  
22069 Rovellasca  
Phone +39 02967 40 268  
Fax +39 02967 40 273



## Malaysia

**Intotest Sdn Bhd**  
75460 Melaka  
Phone +60 6 336 122 9  
Fax +60 6 336 122 8



## Namibia

**IAE cc**  
9000 Windhoek/Namibia  
Phone +264 61 30 53 13  
Fax +264 81 12464 10



## Netherlands

**Digitron Electronics**  
1802 KC Alkmaar  
Phone +31 72 564 6661  
Fax +31 72 564 6667



## New Zealand

**Horizon Technology Ltd**  
North Harbour, Auckland  
Phone +64 9 914 0066  
Fax +64 9 914 0055



## Norway

**Autic system A/S**  
3110 Tonsberg  
Phone +47 333 009 50  
Fax +47 333 009 55



## Poland

**ENCON**  
53-125 Wroclaw  
Phone +48 71 793 6407  
Fax +48 71 793 6408



## Russia

**Giesbrecht Technology**  
Sankt Petersburg  
Phone +7 812 423 55 54  
Fax +7 812 423 54 38



## Singapore

**TDS Technology**  
729493 Singapore  
Phone +65 6366 1661  
Fax +65 6366 1661



## Slovakia

**FCC s.r.o.**  
811 04 Bratislava  
Phone +421 259 104 067  
Fax +421 259 104 068



## Slovenia

**SMM proizvodni sistemi**  
2000 Maribor  
Phone +386 2 450 23 00  
Fax +386 2 450 23 02



## South Africa

**RJ Programmable Techniques**  
Ferndale 2194  
Phone +27 11 781 0777  
Fax +27 11 781 7204



## Spain

**AN Consult España, S.L.**  
28931 Móstoles-Madrid  
Phone +34 9 1613 0031  
Fax +34 9 1613 6506

**ER-SOFT S.A.**  
28230 Las Rozas  
Phone +34 916 408 408  
Fax: +34 916 408 409



## Sri Lanka

**IMA Control HAIDL**  
Moratuwa (Colombo)  
Phone +94 77 7709675  
Fax +94 75 551121



## Sweden

**Germatech AB**  
55321 Jönköping  
Phone +46 36 34 6010  
Fax +46 36 16 8262



## Switzerland

**Gratso**  
8422 Pfungen  
Phone +41 52 315 1568



## Thailand

**P.S Union Progress Co**  
Ladprao Bangkok 10230  
Phone +662 931 19445  
Fax +662 931 1989



## Turkey

**EMIKON LTD. STI.**  
34776 Y. Dudullu Istanbul  
Phone +90 216 420 83 45  
Fax +90 216 420 83 48



## Ukraine

**Giesbrecht Technology**  
24405 Winnitsa  
Phone +38 04352 216 69  
Fax +38 04352 234 51



## USA

**Software Toolbox Inc.**  
Matthews, NC 28105  
Phone +1 704 849 2773  
Fax +1 704 849 6388

**Trans Tech International**  
West Harwich, MA  
Phone +1 781 455 6827  
Fax +1 866 254 5215

### Copyright:

SIMATIC S5, SIMATIC S7, STEP 5, MicroWin, STEP 7, Graph5, S7-200, S7-300, S7-400, S7-1200, MPI, DP, PPI and CP are registered trademarks of Siemens Aktiengesellschaft, Berlin and Munich. Windows and Vista is a registered trademark of Microsoft Corporation.